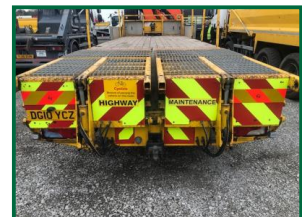


# MAN TGS 26.320



## £POA

MAN TGS 26.320,  
Automatic,  
6x2 rear steer,  
Plant body with cheese wedge body, PM25SP remote control,  
12 months MOT,  
New crane test, tool boxes,  
Inspected ready to go.

### Product Details

| Product Details      |                    |
|----------------------|--------------------|
| <i>Category/Type</i> | <i>Beavertails</i> |
| <i>Make</i>          | <i>MAN</i>         |
| <i>Model</i>         | <i>TGS 26.320</i>  |
| <i>Year</i>          | <i>2010</i>        |
| <i>Mileage</i>       | -                  |

**Paradise Lane, Featherstone, Wolverhampton, WV10 7NZ**

**Tel: 01902 790310 / 790782 Fax: 01902 791537**

**www.bickfordtrucks.com info@bickfordtrucks.com**